

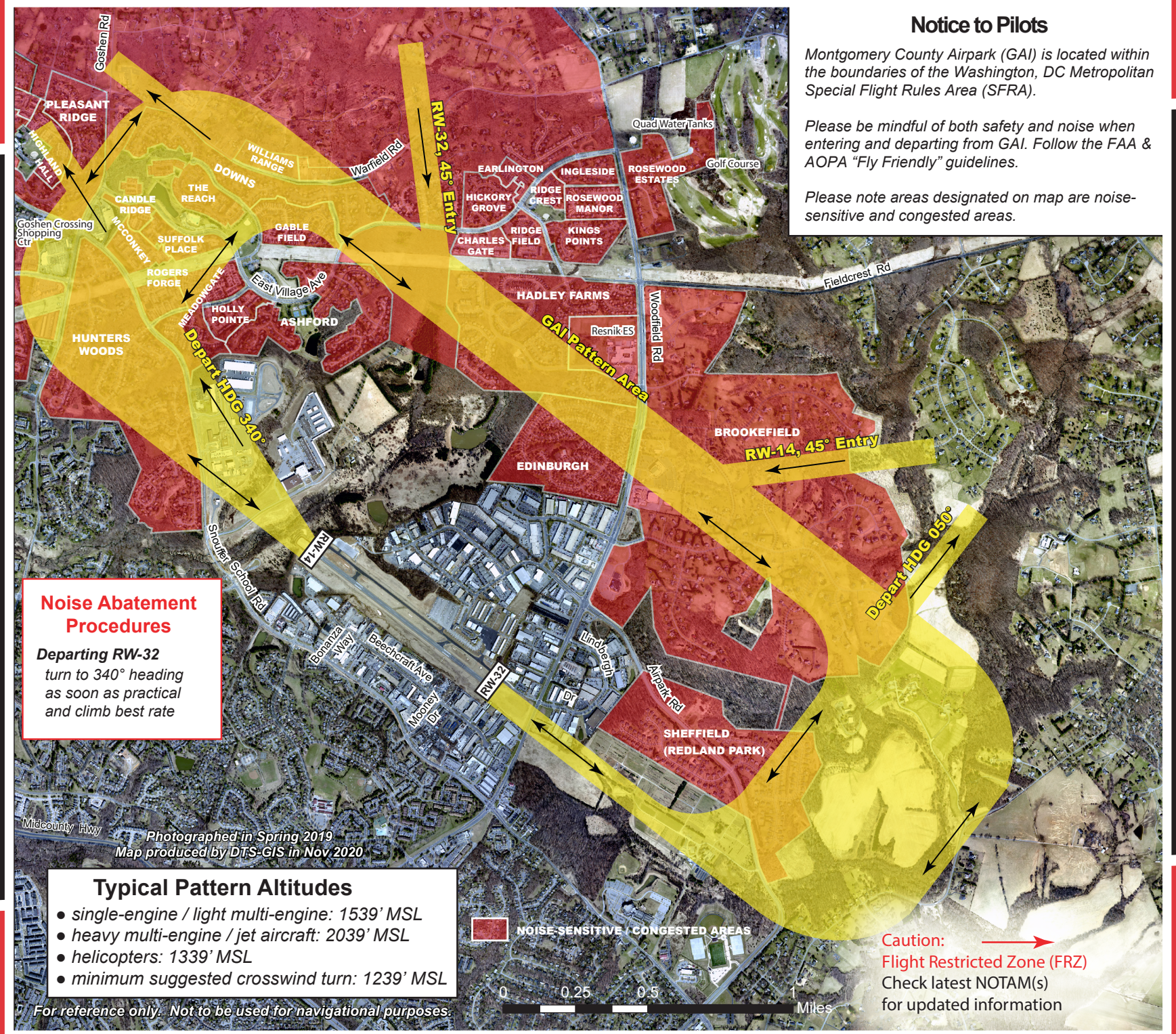
# PILOT'S GUIDE TO MONTGOMERY COUNTY AIRPARK (GAI)



**GAI** A Division of  
Montgomery County  
Revenue Authority



*As pilots, we are the key to a successful noise management program. We urge your cooperation and thank you for helping GAI to be a good neighbor.*



# MONTGOMERY COUNTY AIRPARK (GAI)

## Airport Information

Elevation .....	539' MSL
Runway .....	32-14 Length 4201 Width, 75 Asphalt
Taxiway .....	Width 35' Asphalt
Traffic Pattern .....	RW 32-Right Hand Pattern
Sectional Chart.....	Washington
Area Chart.....	Baltimore/Washington
Approaches .....	Non-Precision VOR 14, RNAV (GPS) 14
Unicom (CTAF) .....	123.075
Fuel/Services.....	122.85
Lights.....	MIRL (PCL 123.075), Rotating Beacon, VASI RW 14
AWOS.....	128.275, Phone 301-977-2971
Clearance Delivery.....	121.600
Clearance Delivery Telephone.....	866-429-5882
Fixed Based Operator (FBO) .....	301-963-8043
DC Metro Aviation Services	
Full Service - Jet A, Full & Self Service - 100LL Fuel	
Aircraft Storage and Hangars	
Flight Instruction	
Bravo Flight Training.....	240-780-7697
Pilot in Training Flight Academy .....	929-235-4272
Positive Attitude Aviation .....	301-704-0345
Washington Intl. Flight Academy (WIFA) .....	240-246-7529
Maintenance Services	
D&P Testing.....	301-980-4220
Deblois Aerospace.....	301-641-4657
GAI Aircraft Services.....	202-664-3635
Paragon Aviation Detailing.....	571-499-2063
Positive Attitude Aviation .....	301-704-0345
Rodgers Precision Maintenance LLC.....	713-628-7781
Part 135 Charters	
OpenAir Charters.....	800-940-2FLY
Café.....	301-330-2222
Airport Manager.....	301-963-7100

## Local and Frequently Called Numbers

Emergency/Police/Fire.....	911
Suspicious Activity .....	1-866-GA-SECURE
FAA Hotline/Noise Complaints.....	1-800-322-7873
Baltimore Flight Standards District Office.....	410-787-0040
Rental Cars	
Enterprise .....	301-948-8188
Hertz.....	301-260-9393
Taxi Services	
Action Taxi .....	301-840-1122
Orange Taxi .....	301-912-0000
Limousine Service	
Martin's Sedans.....	301-260-9393
Presidential Limo .....	301-840-5500
RMA Limo .....	301-231-6555
Hotels/Motels	
Comfort Inn Shady Grove .....	301-330-0023
Courtyard by Marriott.....	301-527-9000
Hilton Gaithersburg.....	301-977-8900

Although several sources of information exist that apply to the "Rules of the Road" or commonly used procedures to ensure orderly traffic flow at non-towered airports, the Montgomery County Revenue Authority (MCRA), along with the Aircraft Owners and Pilots Association (AOPA), local flight instructors and others, have contributed information contained in this brochure that is to be considered as "local" procedures that apply to pilots flying in and out of Montgomery County Airpark (GAI).

This publication is not intended to substitute for official FAA recommended procedures at non-towered airports in terms of basic right-of-way rules and traffic flow. Rather, its purpose is to show pilots flying to and from GAI the generally expected methods of pattern entry and exit along with typical altitudes and communication frequencies. By practicing the procedures as illustrated, a safer flying environment along with reduced noise disturbances to our neighbors on the ground should result.

In addition to departure and arrival recommendations, we have included noise abatement information, typical pattern altitudes for single and multi-engine aircraft along with helicopters, typical touch and go flight track patterns, and a comprehensive list of important and frequently used telephone numbers.

The MCRA is the owner, operator and grant sponsor of GAI and we welcome comments and/or suggestions to improve this publication. Thank you for your cooperation.

**KEITH MILLER**  
Chief Executive Officer  
Montgomery County Revenue Authority  
[www.montgomerycountyairpark.com](http://www.montgomerycountyairpark.com)



## Noise Abatement Suggestions

- Follow published noise abatement procedures.
- Calm wind – use Runway 14.
- If practical, and within manufacturer's guidelines, Reduce RPMs after lift off.
- Avoid intersection take offs.
- Climb at best rate, not best angle.
- AIM minimum suggested crosswind turn at 1239' MSL.



Updated November 2020